



Cross-border initiative for integrated health and social services
promoting safe ageing, early prevention and independent living for all

– **Cross4all** –

(Reg. No: 1816)

Presentation of Partnership

Presentation of LB1 - Aristotle University of Thessaloniki

Kick off Meeting, 05-06 June 2018

Host: LB1 - Aristotle University of Thessaloniki

Venue: Aristotle University Research Dissemination Center (KEDEA), Thessaloniki

Presenter: Ioanna Chouvarda





- The Aristotle University of Thessaloniki is the largest university in Greece covering all disciplines. Approximately 74,000 students study at the Aristotle University.
<https://www.auth.gr/en>
- Laboratory of Computing, Medical Informatics and Biomedical-Imaging Technologies
 - part of the School of Medicine, Faculty of Health Sciences of AUTH
 - strong collaboration with University Clinics in the design, conduct and analyses of clinical studies
 - the Lab has been running since 1998 the graduate programme in Greece in Medical Informatics

LOMI Research

Medical data management,
EHR/PHR



Biomedical signal/image
analysis



Knowledge engineering and
decision support systems

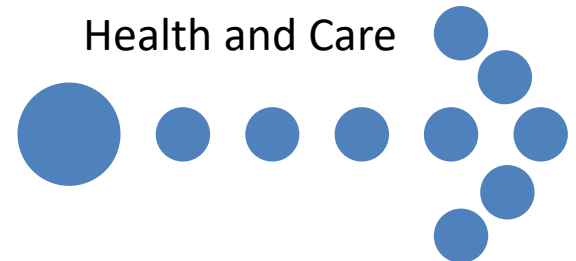


E-health, m-health and
telehealth applications



Connected
Health
Technologies

New integrated
services for
Health and Care



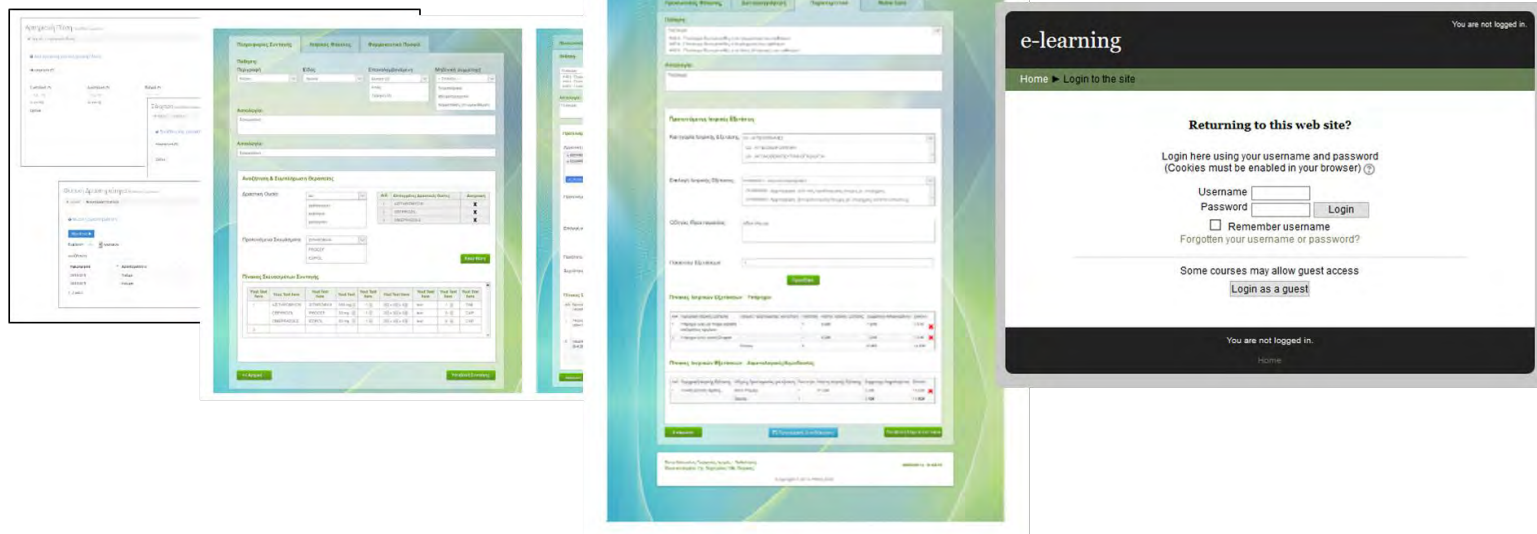
LOMI Research – relevant projects



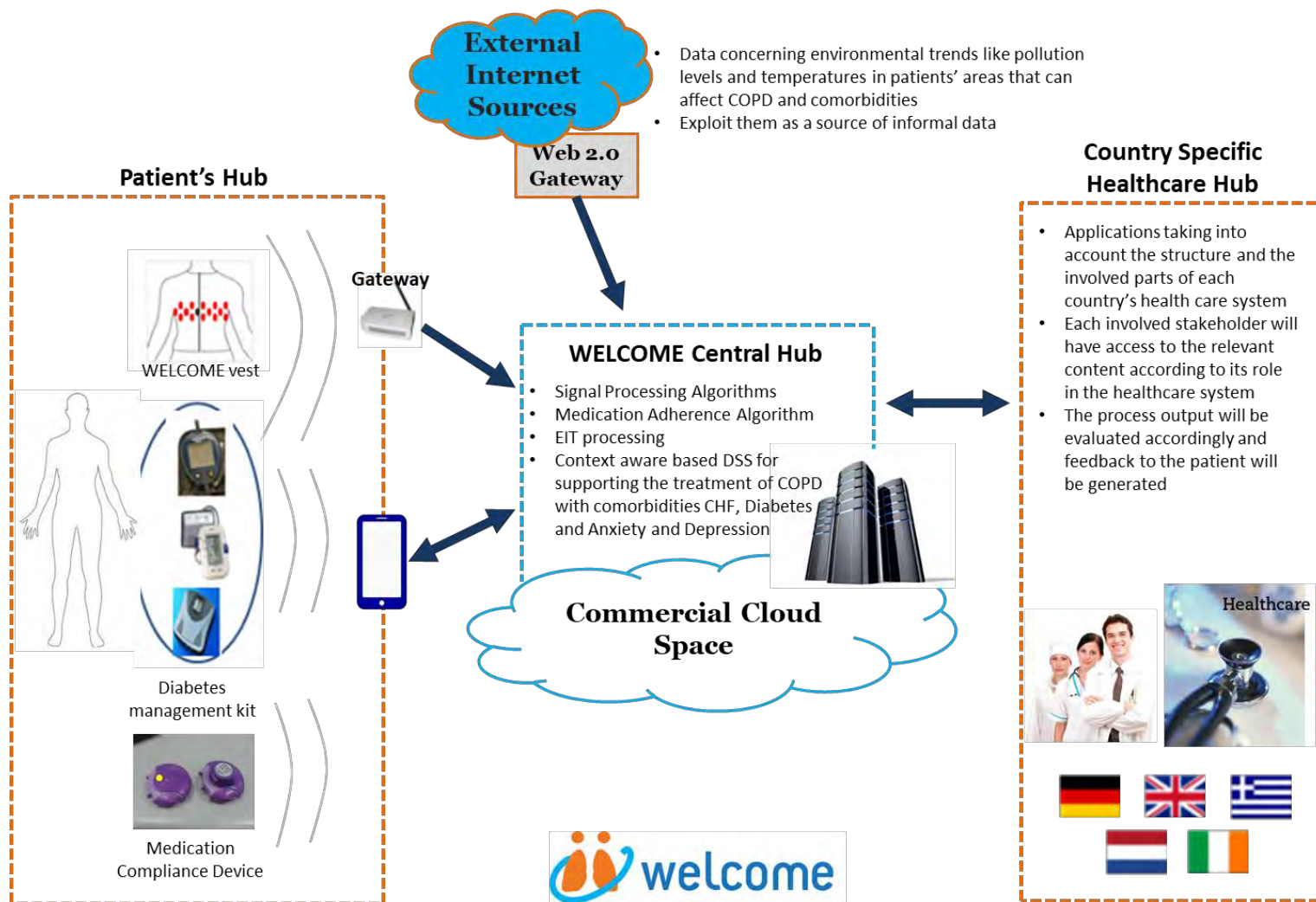
PinCloud - Providing Integrated eHealth Services for Personalized Medicine utilizing Cloud Infrastructure

[NSRF 2007-2013, Cooperation 2011, Grant no. 11ΣYN_6_116]

PIN CLOUD - a multidisciplinary project that combined state of the art technologies like cloud computing, SOA, homecare telemedicine technologies, **ePHR**, **e-Prescribing**, **e-referral** and **e-learning**. The combination of these technologies led to an innovative integrated ehealth platform, delivering many benefits to the society, the economy the industry and the research community.



LOMI Research – relevant projects



LOMI Research – relevant projects



IN LIFE - INdependent Living support Functions for the Elderly

[HORIZON 2020 Grant No. 643442]

Our team: tool development, support Greek pilot site, pilot results consolidation

Baseline assessment and on site pilots were conducted in 6 European countries (Greece, Slovenia, Spain, Sweden, The Netherlands and United Kingdom) to evaluate the IN LIFE integrated platform and 19 services (supporting daily activities, health maintenance, socialization and communication, travel and mobility, were assessed by four types of users (Elderly users with cognitive impairment, Informal caregivers, Healthcare professionals and Stakeholders



In total 2,911 users participated in the IN LIFE pilots, 953 formed the population baseline assessment and 1,958 made use of the IN LIFE services through the IN LIFE application centre in for a period of at least 7 months. Findings: For the participants of most pilot sites, the **increase in the MMSE score**, the **decrease in the negative PANAS**, and **the decrease in the informal caregivers' burden** have all shown to have statistical significance, thus receiving positive and encouraging outcomes and findings through our pilots.

LOMI @ CROSS4ALL

- Technical Aims
 - To leverage our platform to a mature and Personal Health Record
 - To scale-up our telehealth solutions
- Aimed Scientific and Social Impact
 - Real life m-health services
 - Integrated care
- Aimed collaborations
 - Primary care users and service providers
 - Academic partners

The LOMI Team @ CROSS4ALL



What are our interests / expectations in the Project

- Interests
 - Apply state-of-the-art technologies for providing high quality health services to citizens
 - Novel approaches for AAL of isolated individuals
- Expectations
 - Promote self awareness and management of health and health data

Our main role in the Project

- Project Coordination
- Dissemination / Publicity management
- Technology provider (PHR, eLearning content, Mobile kits)
- Contribute to know-how exchange and people-to-people activities for developing joint knowledge, strategies and plans
- Support the Local Pilots
- Impact assessment
- Sustainability studies / activities

Our main deliverables

- Dissemination / communication plan
- Telephone-based survey in Greece
- Storing and analysis tools for the project inspections
- Development of PHR subsystem
- Development of mobile sets for preventive health checks
- Lessons learned & Impact assessment report
- Sustainability plans
- Transferability event in Athens

Our draft procurement plans

- First Level Control: **5.000€ (incl. VAT)**
- Translation services: **3.080,00€ (incl. VAT)**
- Equipment: **11.700,00€ (incl. VAT)**
- External service for the telephone-based survey: **8.060,00€ (incl. VAT)**
- External expertise for eLearning content: **34.100,00€ (incl. VAT)**
- Consulting services (studies, events, ...): **9,450,00€ (incl. VAT)**

Short term plans (6 months)

- Organise the Kick-off meeting, follow-up
- Assign staff to the project
- Prepare the tenders for
 - the equipment
 - the telephone-based survey
- Participate to the project study visits

Local project coordination and management

- **Project Manager:** Responsible for the management of the project (reporting, monitoring, etc.) - Part time (approx. 10 hrs per month)
- **PM Assistant:** To be hired to support the PM - Part time (approx. 15%)
- **Communication Manager:** To be hired – Part time (approx. 10hrs per month)
- **Leader of the s/w development team (PHR)**